

**TRANSITIONAL** (BASE MODEL FAÇADE)



**Metzler**  
HOME BUILDERS



**PARKSIDE**  
— at —  
LAMPETER

STARTING AT

**\$538,000**

PRICE SUBJECT TO CHANGE

BUILDING FOR GENERATIONS

**ABOUT THE HOME**

*This two-story home features a semi-open floor plan and two-car garage. With a large mudroom, three bedrooms, and laundry on the second floor, this home is perfect for a growing family.*

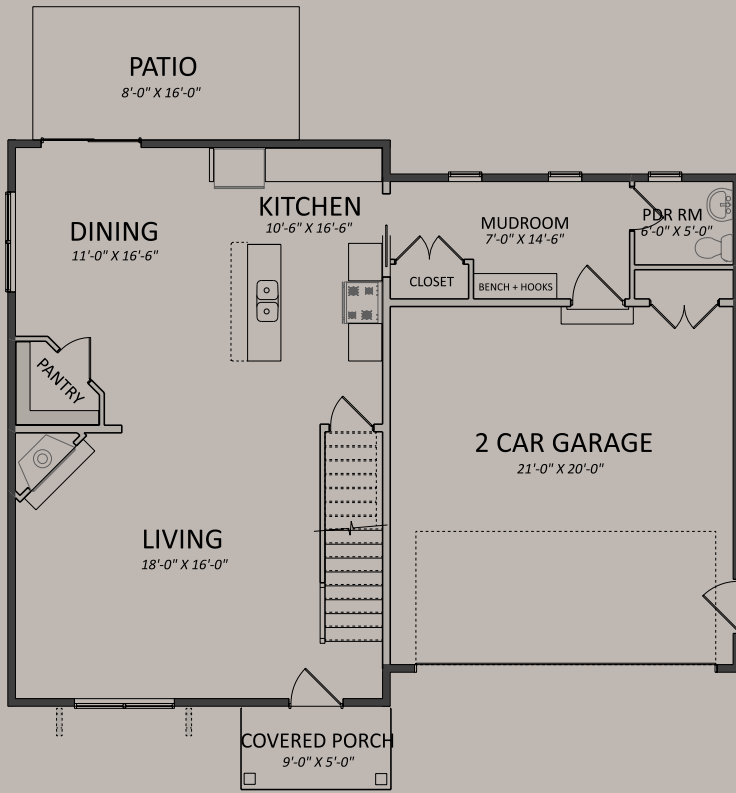
**the**  
**ASH**



2,005 SQFT



3 BED  
2.5 BATH



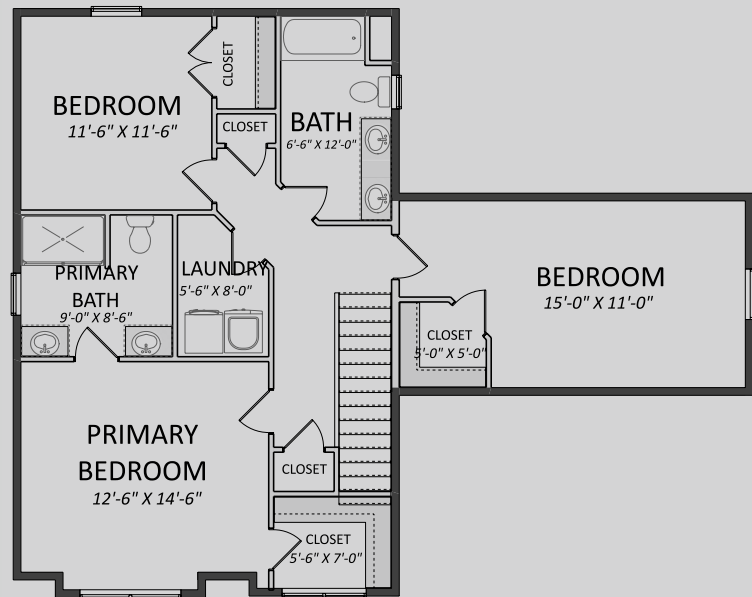
**FIRST FLOOR PLAN**  
955 sqft.

## STANDARD FEATURES

- 9ft. Precast Superior Walls in Basement
- 9ft. Ceilings on First Floor
- 8ft. Ceilings on Second Floor
- Covered Front Porch
- Double Hung Vinyl Windows
- Natural Gas Fireplace and Custom Surround
- Natural Gas Furnace and Air Conditioning
- Semi-Custom Cabinetry
- Quartz Countertops in Kitchen
- Tile Backsplash in Kitchen
- Large Pantry and Large Island in Kitchen
- Enhanced Trim Package
- Bench and Hooks in Mud Room
- Vinyl Plank Flooring in Living Areas
- Vinyl Flooring in Bathrooms
- Carpet in Bedrooms
- Stainless Steel Appliance Package
- Refined Front Door
- 2 Car Garage with Large 18ft. Garage Door
- Rear Concrete Patio

## COMMUNITY FEATURES

- Countryside Setting
- Adjacent to Village Park with Additional Walking Paths
- Neighboring the YMCA
- Lampeter Strasburg School District
- HOA including Open Space and Stormwater Management
- Multiple Architectural Styles Available
- Multiple Materials and Colors Available



**SECOND FLOOR PLAN**  
1,050 sqft.



Check out more available homes and lots by scanning here.

TO INQUIRE , CONTACT ROB HESS AT



(c) 717.314.9000

(o) 717.569.8701

ROB@KINGSWAYREALTY.COM





# CRAFTSMAN

*presented in  
Exterior Color Option #3*



# FARMHOUSE

*presented in  
Exterior Color Option #1*



# CONTEMPORARY

*presented in  
Exterior Color Option #9*



**the ASH**  
*architectural façade upgrades*